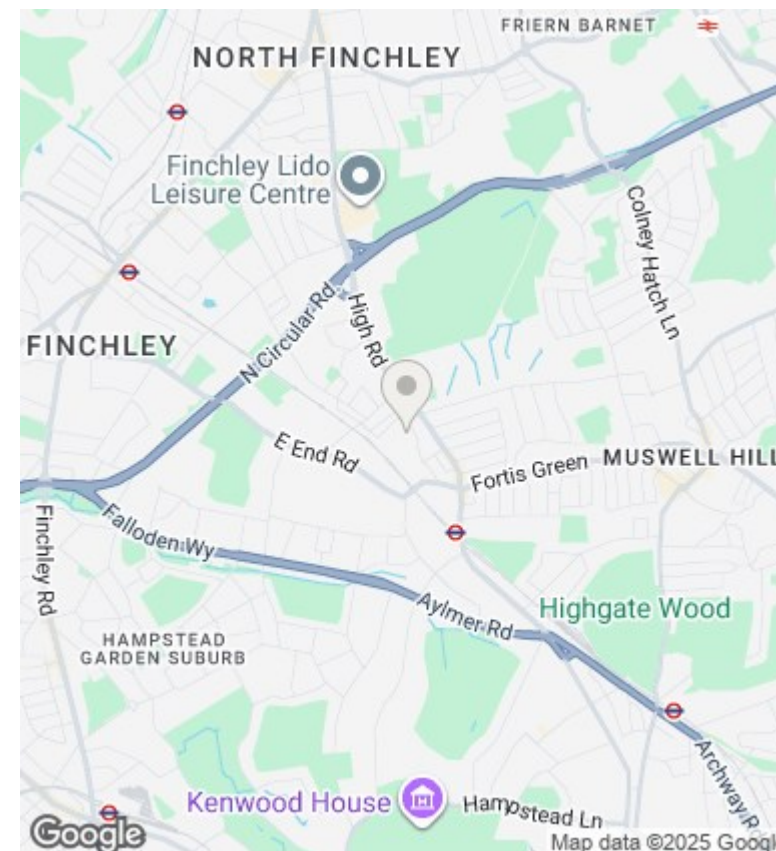
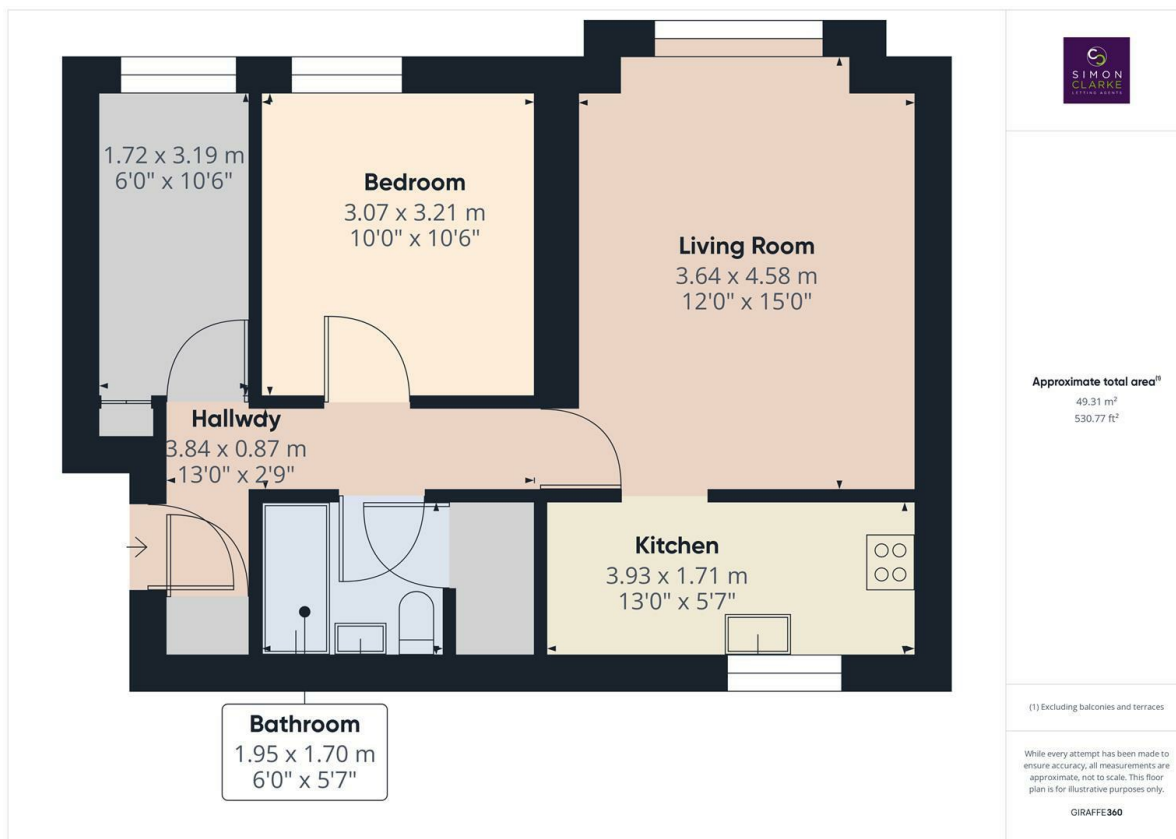




New Ash Close, London, N2 8DQ

£1,550 PCM

- Ground floor 1 bedroom purpose built flat WITH STUDY ROOM
- Walking distance to East Finchley tube station
- Available on long term tenancy (Initial 12 months)
- Available 9th January 2026
- Laminate wood flooring throughout
- Ample storage space plus bicycle storage
- Council tax band D - £2,035.52 per annum
- Modern bathroom suite
- Allocated off street parking space
- Part furnished



Directions

Viewings

Viewings by arrangement only. Call 02083499000 to make an appointment.

Council Tax Band

D

EPC Rating:

C

Energy Efficiency Rating		
	Current	Potential
Very energy efficient - lower running costs		
(92-plus) A		
(81-91) B		
(69-80) C	69	77
(55-68) D		
(39-54) E		
(21-38) F		
(1-20) G		
Not energy efficient - higher running costs		
England & Wales	EU Directive 2002/91/EC	